

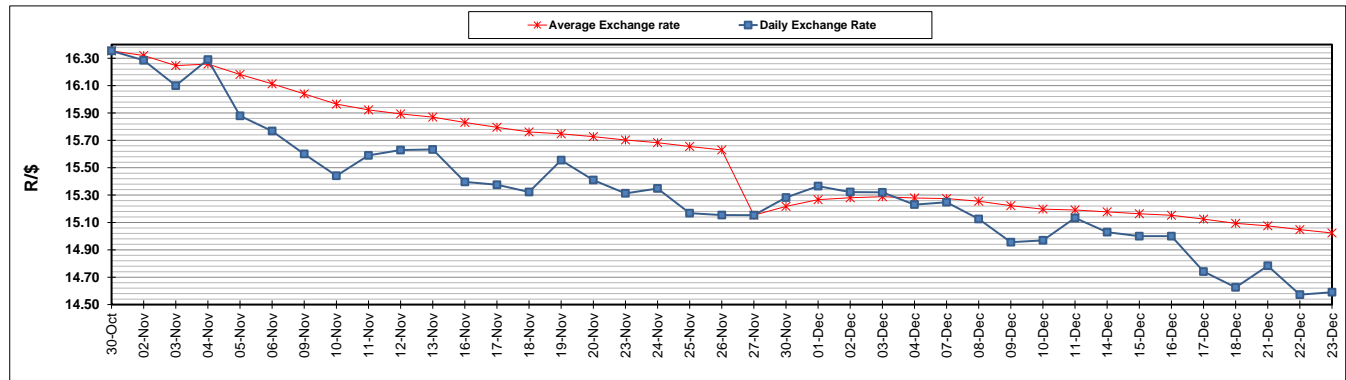
	PETROL 95 ULP	PETROL 93 ULP & LRP	DIESEL 0.05%	DIESEL 0.005%	ILL. PAR.
GAUTENG PUMP PRICE (SA c/l) AS FROM 02/12/2020	1,446.000	1,426.000	-	-	-
WHOLESALE PRICE (SA c/l) AS FROM 02/12/2020	-	-	1,245.420	1,247.820	684.688
SINGLE NATIONAL MAXIMUM RETAIL PRICE	-	-	-	-	856.000
BASIC FUEL PRICE - 23/12/2020 (SA c/l)	523.971	517.648	539.564	542.402	524.930
PRESS RELEASE CONTRIBUTION TO BFP 02/12/2020 - 23/12/2020 (SA c/l)	479.170	469.170	486.630	489.030	472.128
UNIT OVER/(UNDER) RECOVERY - 23/12/2020 (SA c/l)	(44.801)	(48.478)	(52.934)	(53.372)	(52.802)
AVERAGE BASIC FUEL PRICE 27/11/2020 - 23/12/2020	519.971	513.816	538.425	539.843	523.019
AVERAGE UNIT OVER/(UNDER) RECOVERY 27/11/2020 - 23/12/2020	(36.490)	(40.336)	(53.689)	(52.708)	(54.207)

ANALYSIS MOVEMENT OF AVERAGE OVER/(UNDER) RECOVERY

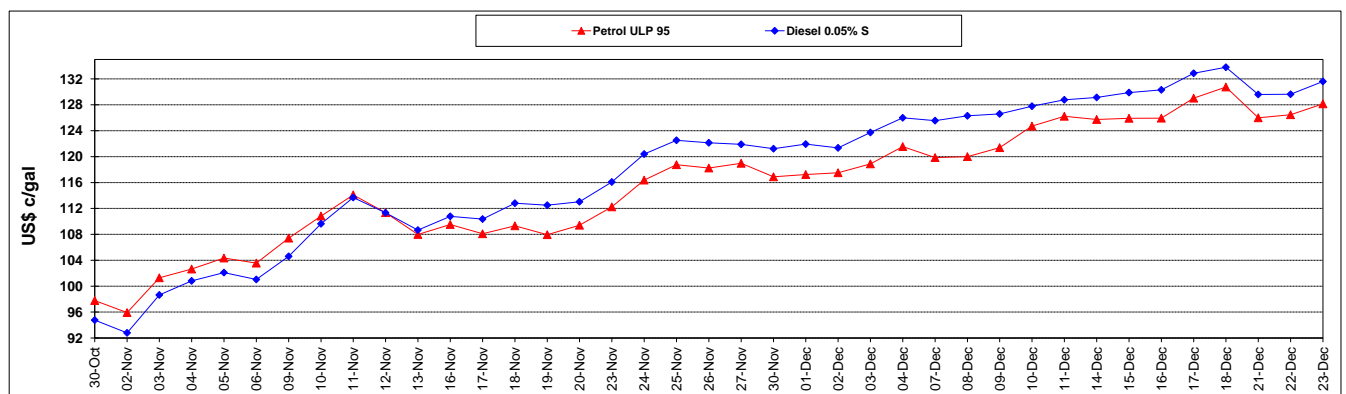
	PETROL 95	PETROL 93	DIESEL 0.05%	DIESEL 0.005%	ILL. PAR.
- MOVEMENT IN INTERNATIONAL PRODUCT PRICES	(57.502)	(61.098)	(75.448)	(74.523)	(75.342)
- MOVEMENT IN EXCHANGE RATE	21.012	20.763	21.758	21.815	21.135
AVERAGE UNIT OVER/(UNDER) RECOVERY 27/11/2020 - 23/12/2020	(36.490)	(40.336)	(53.689)	(52.708)	(54.207)

R/\$ EXCHANGE RATE - (R/\$14.5900 - 23/12/2020)

EXCHANGE RATE USED IN BASIC FUEL PRICE



INTERNATIONAL PRODUCT PRICES OF BASKET USED IN BASIC FUEL PRICE



BASIC FUEL PRICE IN SA CENTS PER LITRE

